

**Autogas conversion system
for Heavy Duty Trucks
LPG & CNG
DIESEL**





SPARK Diesel kit is differentiated by its advanced technology and versatility. It can be used in all turbodiesel vehicles, aspirated, with mechanical and electronic pumps.

It can also be installed interchangeably in 12 volt and 24 volt vehicles, using a current transformer.

The control unit uses the following read signals: OBD, CAN, TPS, TPS 2, turbine, digital and analog electronic throttle.

The security systems are the following: temperature probe, knock sensor.



In addition to all the basic settings for programming, the program includes the following elements:

Oscilloscope The oscilloscope allows you to read the digital signals of the accelerator, setting the AFR allows you to read the values of the muffler exhaust, and perform the gas and diesel dosing, aligning the correct percentage of the two fuels, without increasing fat or lean combustion.

CAN By connecting the CAN, we read all the vehicle's parameters, and transfer them to the LPG control unit, to respect all the values without increasing the percentages.

OBD Activating OBD allows us to connect to the diesel engine control unit system and cut the diesel with 45% LPG and 55% CNG.



Detonation sensor

The detonation sensor allows us to read the noise of the diesel engine and intervenes in the event of increased LPG / Diesel noise, blocking and excluding the LPG control unit, changing the operation to Diesel only.

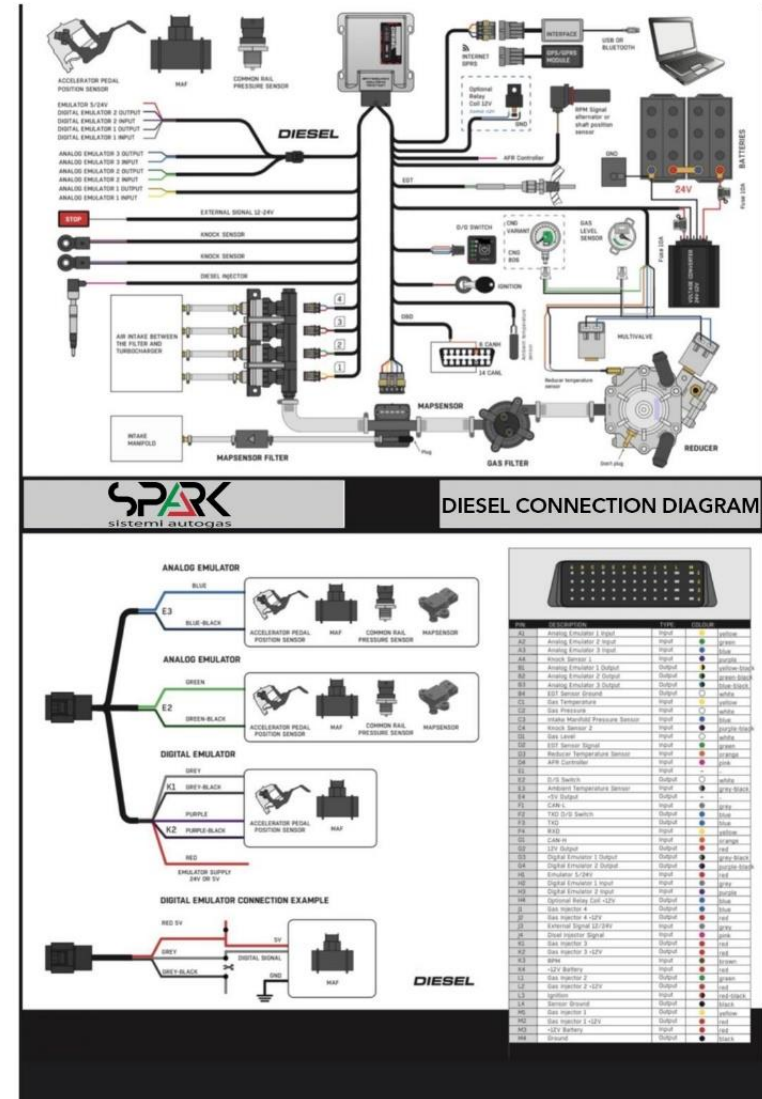
Temperature sensor

It is installed in the exhaust manifold after the turbine, it reads only the operating temperature of the diesel and reports it to the LPG control unit, which allows to deactivate the gas if it exceeds 5 degrees when running on Diesel / LPG. The new control unit can also be linked to the Bluetooth interface in the vehicle without running any cables.

Basic configuration of the kit –

Connections diagram

- SPARK DIESEL LPG
- SPARK DIESEL Ecu set D12 / 24 Incluye interruptor - Sensor de mapa - Sensor de temperatura - Sensor de detonación - Cableado
- Inyector SPARK IG7 Dakota 2 ohm 4 cyl. completo con juego completo de boquillas
- Filtro de gas SPARK BLASTER
- Reductores GLP Tomasetto Modelo AT09 NORDIC - 125 Kw
- Set de montaje 4 CYL
- Multiválvula SPARK toroidal estándar con bobina / toroidal o cilíndrica 30 ° con sensor 1050
- Camara hermetica
- Toma de carga SPARK para puerta de gasolina
- Manguera Termoplastica 6mm x 6 mm
- Manguera Termoplastica 8mm x 2 mm
- Tubo corrugado x 5 mm
- Mangueras para gas 12x19x1 mm
- Mangueras para gas 5x11 x 2 mm
- Mangueras para vacío 4x9x2mm
- Mangueras para agua 16x24x2mm



AD Ecomotive Srls

Via Girelli 36 25125

Brescia - Italia

info@adecomotive.com

www.adecomotive.com

Whatsapp:

+39 349 622 6420

